

Gateway Electric Makes the Smart Choice on Case Western Project

New Dormitory Development Utilizes P&S PlugTail™ Wiring Devices

When students return to Case Western Reserve University in Cleveland in the fall of 2005, they will be greeted with a new, state-of-the-art on-campus living and learning environment. The University has developed a new North Residential Village which consists of three buildings incorporating apartment-style housing for 749 students.

“This is the closest thing to a perfect wiring device.”

Also included in the seven residential houses are 13 group study rooms, seven music practice rooms, indoor bike storage, five laundry rooms,

a fitness center, a convenience store and a cyber-café with Starbucks®

The three residences will surround the university’s new athletic field and track along three sides, with a 1,200-car garage closing the fourth side.

Construction on this project, which is



the first of a multi-phase campus rebuilding effort, began less than 18 months ago in December 2003.

Case Western Reserve selected Whiting-Turner Contracting Company, in partnership with Bradley Construction, to oversee the first phase of construction. Founded in 1909, Whiting-Turner is headquartered in Baltimore with regional offices nationwide and is one of the largest general contractors in the U.S.

A project of this size requires substantial electrical systems, and Gateway Electric Company was one of two

COMPANY:

Gateway Electric Company
Cleveland, OH

PROJECT MANAGER:

Ted Daly

NUMBER OF EMPLOYEES ON PROJECT:

40+ employees

PROJECT:

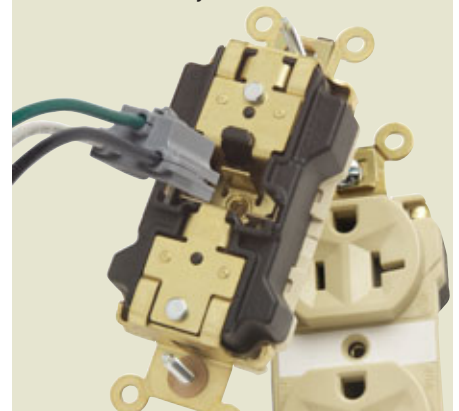
Case Western Reserve University
Phase I Residential Dormitories

PROBLEM:

This large and complicated job was on a fast track that needed to be completed in less than 18 months.

SOLUTION:

Gateway was able to install PlugTail wiring devices on the project which allowed them to work on other jobs needing completion before the start of the school year.



Pass & Seymour

electrical contractors selected for the job. Gateway has more than 40 people working on this project, which ends in mid-July.

“This is one of the largest fast-track projects I’ve ever been involved with,” said Ted Daly, project manager for Gateway Electric Company. “We will complete this \$5 million electrical project in about a year and four months. That includes this high-tech dormitory environment, with sub-stations and everything else.”

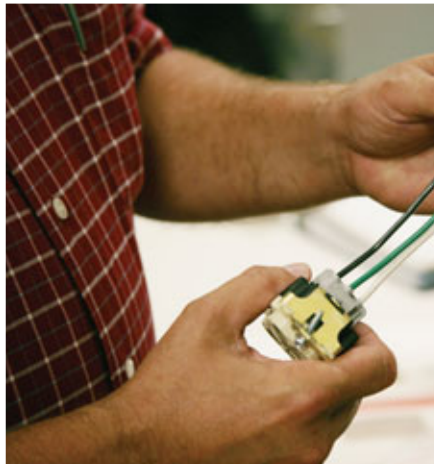


In order to complete this project on time, Daly sought electrical products that would help him increase his

team’s productivity. If he couldn’t save time on part of the project, it would be tough to meet the deadline.

Just before the project began, Mike Poggiali, northeast district sales manager for GE Supply, and Gary Pelc, sales associate for Electrical Sales of Ohio, met with Daly to talk about a new product from Pass & Seymour/Legrand called PlugTail.™

“Gary Pelc and I immediately went out and saw the contractors we knew would be interested in innovation and looking for ways to save time and labor,” said Poggiali. “I’ve known Ted for more than twenty years, and we knew this fast track project would be a good candidate for PlugTail.”



The team showed Ted the product and he was very impressed. “This is the closest thing to a perfect wiring device,” said Daly. “It’s easy to install, it’s finger-safe and makes a lot of sense.”

The time-savings with PlugTail begins at rough-in. Instead of making pig-tails, pre-stripped leads are easily connected to the PlugTail connector. When it’s time to finish wiring, the connector is pulled out of the box and easily snapped into the back of the PlugTail device. Then the device is installed into the box.

“The process doesn’t require preparing, stripping or looping of conductors and PlugTail has additional safety advantages during construction, and long after the project is completed,” said Daly. “Most importantly, with students arriving in a few weeks, we needed products like PlugTail to help us finish the job on time.

However, the project was already into the design/specification phase and PlugTail was not part of the original specification. Daly felt PlugTail would

help him finish the job on time and brought it to Whiting-Turner for approval. Whiting-Turner agreed, but insisted the entire project should use PlugTail, including the other electrical contractor’s portion. So the entire project went for PlugTail.

At an estimated \$126.4 million, Case Western’s new residential program is the largest building project in Cleveland. With PlugTail on the job, Gateway Electric will meet its deadline and students will move into these new facilities without a hitch.



Rajinder Singh, president of Gateway Electric, stands in front of the company’s headquarters in Cleveland, Ohio.

Pass & Seymour

